

PLAN OF SUBDIVISION

LUV USE ONLY
EDITION

PLAN NUMBER
PS830845N

LOCATION OF LAND

PARISH: TARNEIT
TOWNSHIP: -
SECTION: 22
CROWN ALLOTMENT: -
CROWN PORTION: D (PART)
TITLE REFERENCES: Vol. Fol.
LAST PLAN REFERENCE/S: PS830835R (LOT AF)
POSTAL ADDRESS: TUSK LANE
(At time of subdivision) TARNEIT 3029
MGA94 Co-ordinates E 296 600
(of approx centre of N 5812 090
land in plan) **ZONE** 55

COUNCIL NAME: WYNDHAM CITY COUNCIL

VESTING OF ROADS AND/OR RESERVES

NOTATIONS

IDENTIFIER	COUNCIL/BODY/PERSON
ROAD R1 RESERVE No.1	WYNDHAM CITY COUNCIL POWERCOR AUSTRALIA LTD

LOTS 1 TO 500 (BOTH INCLUSIVE) HAVE BEEN OMITTED FROM THIS PLAN.
FOR RESTRICTION A AFFECTING LOTS 501 TO 553 (BOTH INCLUSIVE) SEE SHEET 8.
EASEMENTS E-3 AND E-11 HAS BEEN OMITTED FROM THIS PLAN.

NOTATIONS

DEPTH LIMITATION DOES NOT APPLY
STAGING This ~~is~~ is not a staged subdivision.
Planning permit No.
SURVEY. THIS PLAN IS ~~IS NOT~~ BASED ON SURVEY.
THIS SURVEY HAS BEEN CONNECTED TO PERMANENT MARKS No(s):
PM 90 (TARNEIT), PM158 & PM159 (TRUGANINA)
PROCLAIMED SURVEY AREA:

OTHER PURPOSE OF PLAN:
REMOVAL OF THOSE PARTS OF DRAINAGE EASEMENT E-8 ON PS830835R AS AFFECTS GATHERING GROVE AND PADMA BOULEVARD ON THIS PLAN.
REMOVAL OF THOSE PARTS OF SEWERAGE EASEMENT E-9 ON PS830835R AS AFFECTS GATHERING GROVE AND PADMA BOULEVARD ON THIS PLAN.
REMOVAL OF THOSE PARTS OF DRAINAGE AND SEWERAGE EASEMENT E-10 ON PS830835R AS AFFECTS GATHERING GROVE AND PADMA BOULEVARD ON THIS PLAN.

GROUNDS FOR REMOVAL:
BY AGREEMENT OF ALL INTERESTED PARTIES UPON REGISTRATION OF THIS PLAN PURSUANT TO SECTION 6(1)(k)(iv) OF THE SUBDIVISION ACT 1988.

MARIGOLD 5
2.771ha

53 LOTS

EASEMENT INFORMATION

LEGEND A-Appurtenant Easement E-Encumbering Easement R-Encumbering Easement (Road)

Easement Reference	Purpose	Width (Metres)	Origin	Land Benefited/In Favour Of
E-1	ELECTRICITY SUPPLY	SEE PLAN	INST. A773783	STATE ELECTRICITY COMMISSION OF VICTORIA
E-2	ELECTRICITY SUPPLY	5	INST. A773783	STATE ELECTRICITY COMMISSION OF VICTORIA
	WATER SUPPLY (AS SETOUT IN MEMORANDUM OF COMMON PROVISIONS (MCP) No. AA1195	5	PS820469W	MELBOURNE WATER CORPORATION
E-4	DRAINAGE	SEE PLAN	PS820469W	WYNDHAM CITY COUNCIL
	CREATION AND MAINTENANCE OF WETLANDS, FLOODWAY AND DRAINAGE AS SPECIFIED AND SET-OUT IN MEMORANDUM OF COMMON PROVISIONS NO. AA2741	SEE PLAN	THIS PLAN	MELBOURNE WATER CORPORATION

SEE SHEET 2 FOR CONTINUATION



2360S-05 VER E.DWG MV/BC

SURVEYOR REF: 2360s-05

ORIGINAL SHEET
SIZE: A3

SHEET 1 OF 8

ANTONY WYATT

VERSION E

PLAN OF SUBDIVISION

PLAN NUMBER
PS830845N

Easement Reference	Purpose	Width (Metres)	Origin	Land Benefited/In Favour Of
E-5	DRAINAGE SEWERAGE	SEE PLAN SEE PLAN	PS820469W PS820469W	WYNDHAM CITY COUNCIL CITY WEST WATER CORPORATION
E-6	DRAINAGE SEWERAGE	SEE PLAN SEE PLAN	PS820470N PS820470N	WYNDHAM CITY COUNCIL CITY WEST WATER CORPORATION
E-7	DRAINAGE SEWERAGE	SEE PLAN SEE PLAN	PS830835R PS830835R	WYNDHAM CITY COUNCIL GREATER WESTERN WATER CORPORATION
E-8	WAY	SEE PLAN	PS820469W	WYNDHAM CITY COUNCIL
E-9	SEWERAGE	SEE PLAN	PS841631W	CITY WEST WATER CORPORATION
E-10	DRAINAGE SEWERAGE	SEE PLAN SEE PLAN	THIS PLAN THIS PLAN	WYNDHAM CITY COUNCIL GREATER WESTERN WATER CORPORATION
E-12	SEWERAGE	SEE PLAN	THIS PLAN	GREATER WESTERN WATER CORPORATION

2360S-05 VER E.DWG MV/BC



Member of the Surbana Jurong Group

REF 2360s-05

ANTONY WYATT

VERSION E

ORIGINAL SHEET
SIZE: A3

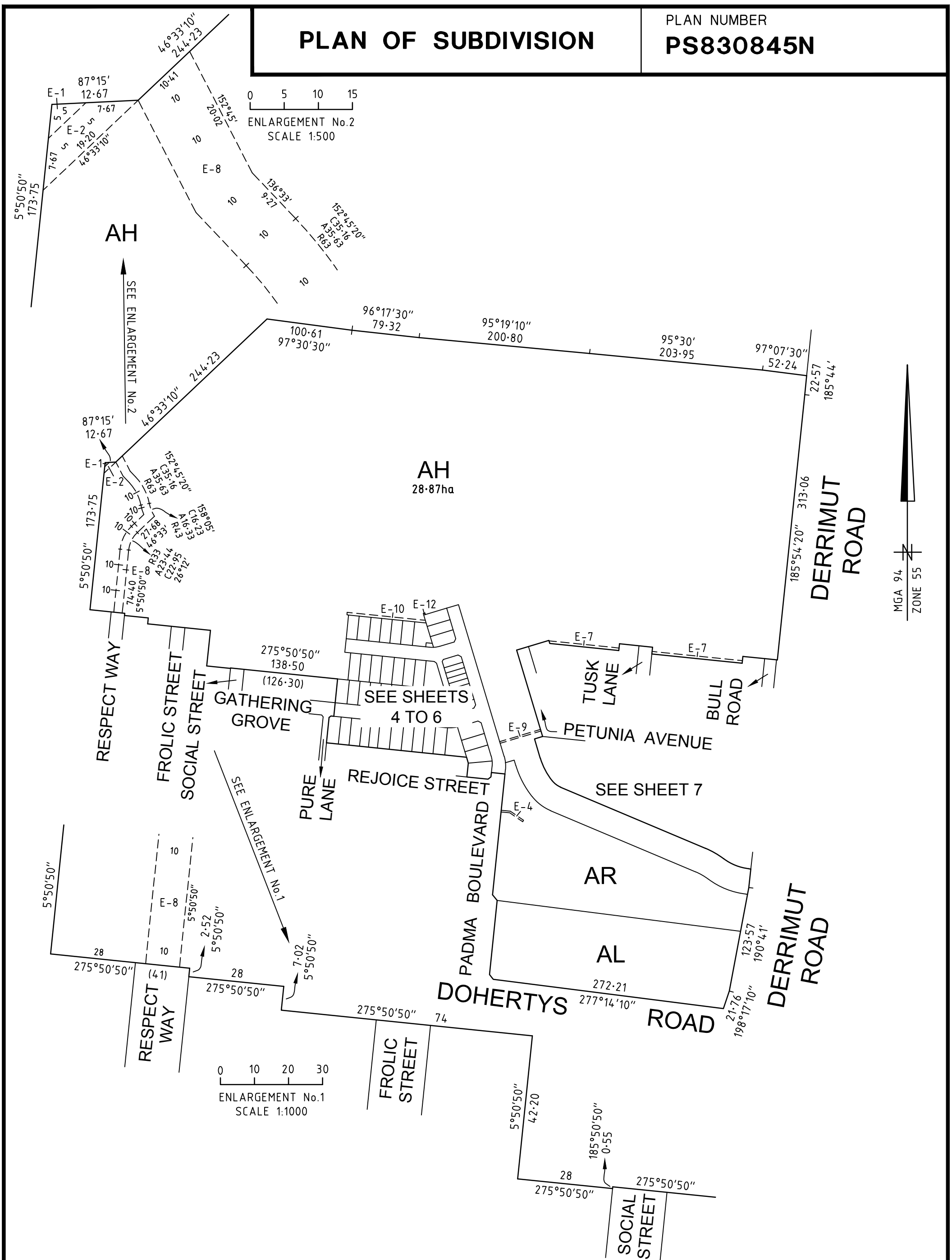
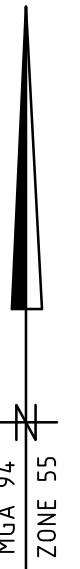
SHEET 2

PLAN OF SUBDIVISION

PLAN NUMBER
PS830845N

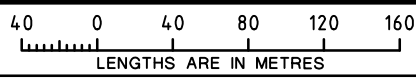
0 5 10 15
ENLARGEMENT No.2
SCALE 1:500

0 10 20 30
ENLARGEMENT No.1
SCALE 1:1000



2360S-05 VER E.DWG MV/BC
SMEC
Member of the Surbana Jurong Group
REF 2360s-05

SCALE
1:4000



ORIGINAL SHEET
SIZE: A3

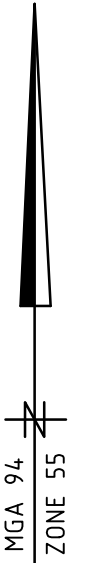
SHEET 3

ANTONY WYATT

VERSION E

PLAN OF SUBDIVISION

PLAN NUMBER
PS830845N



SEE SHEET 5

SEE SHEET 6

SEE SHEET 7

2360S-05 VER E.DWG MV/BC
SMEC
Member of the Surbana Jurong Group REF 2360s-05

SCALE
1:500

LENGTHS ARE IN METRES

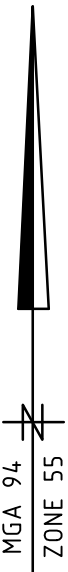
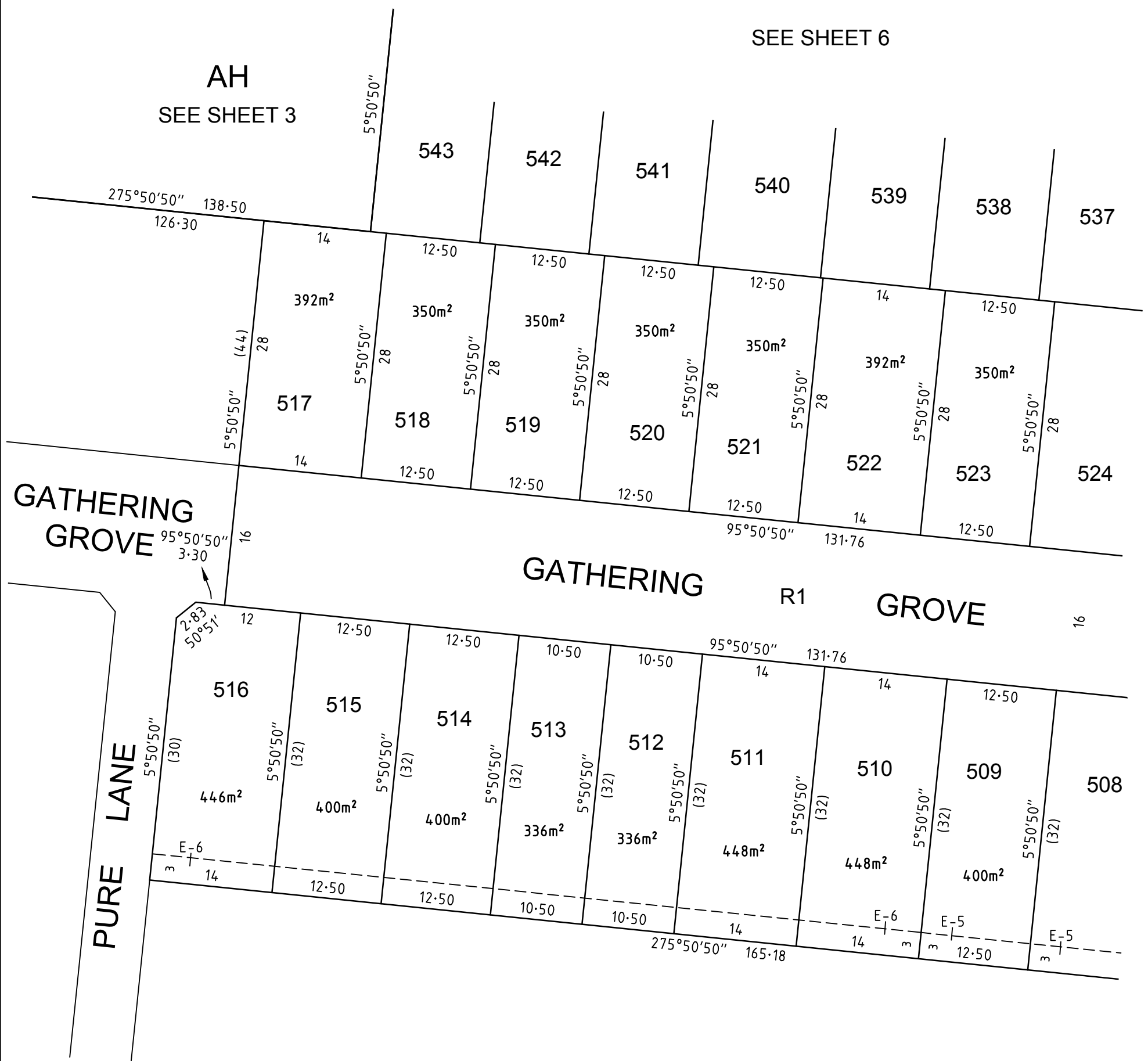
ANTONY WYATT VERSION E

ORIGINAL SHEET
SIZE: A3

SHEET 4

PLAN OF SUBDIVISION

PLAN NUMBER
PS830845N



SEE SHEET 4

2360S-05 VER E.DWG MV/BC

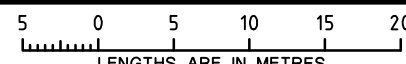


SMEC

Member of the Surbana Jurong Group

REF 2360s-05

SCALE
1:500



LENGTHS ARE IN METRES

ANTONY WYATT VERSION E

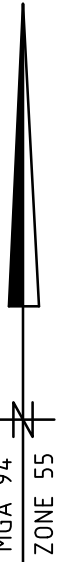
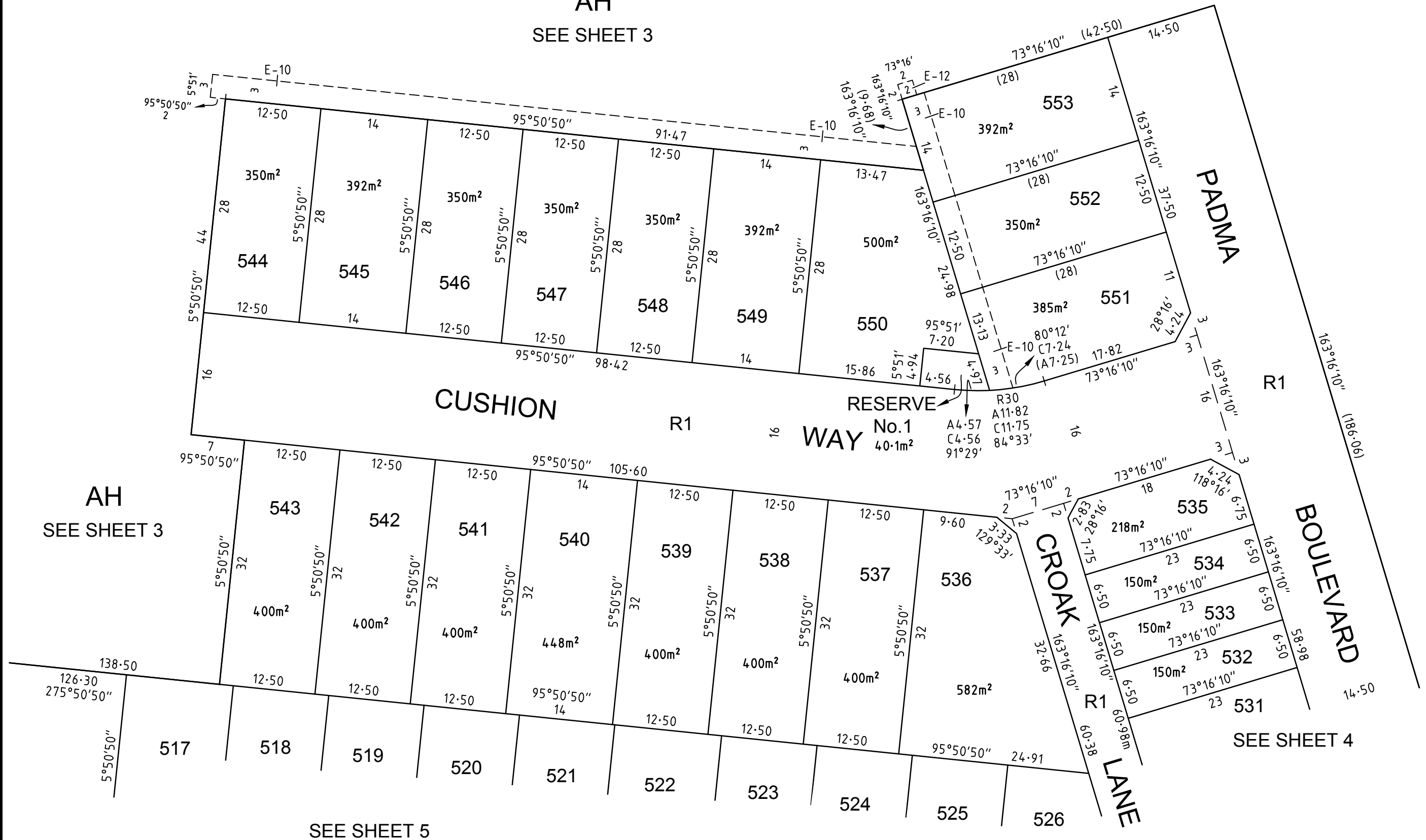
ORIGINAL SHEET
SIZE: A3

SHEET 5

PLAN OF SUBDIVISION

PLAN NUMBER
PS830845N

AH
SEE SHEET 3



AH
SEE SHEET 3

SEE SHEET 5

SEE SHEET 4

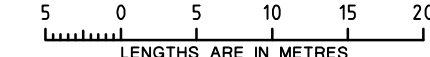
2360S-05 VER E.DWG MV/BC



SMEC

Member of the Surbana Jurong Group REF 2360s-05

SCALE 1:500



LENGTHS ARE IN METRES

ORIGINAL SHEET SIZE A3

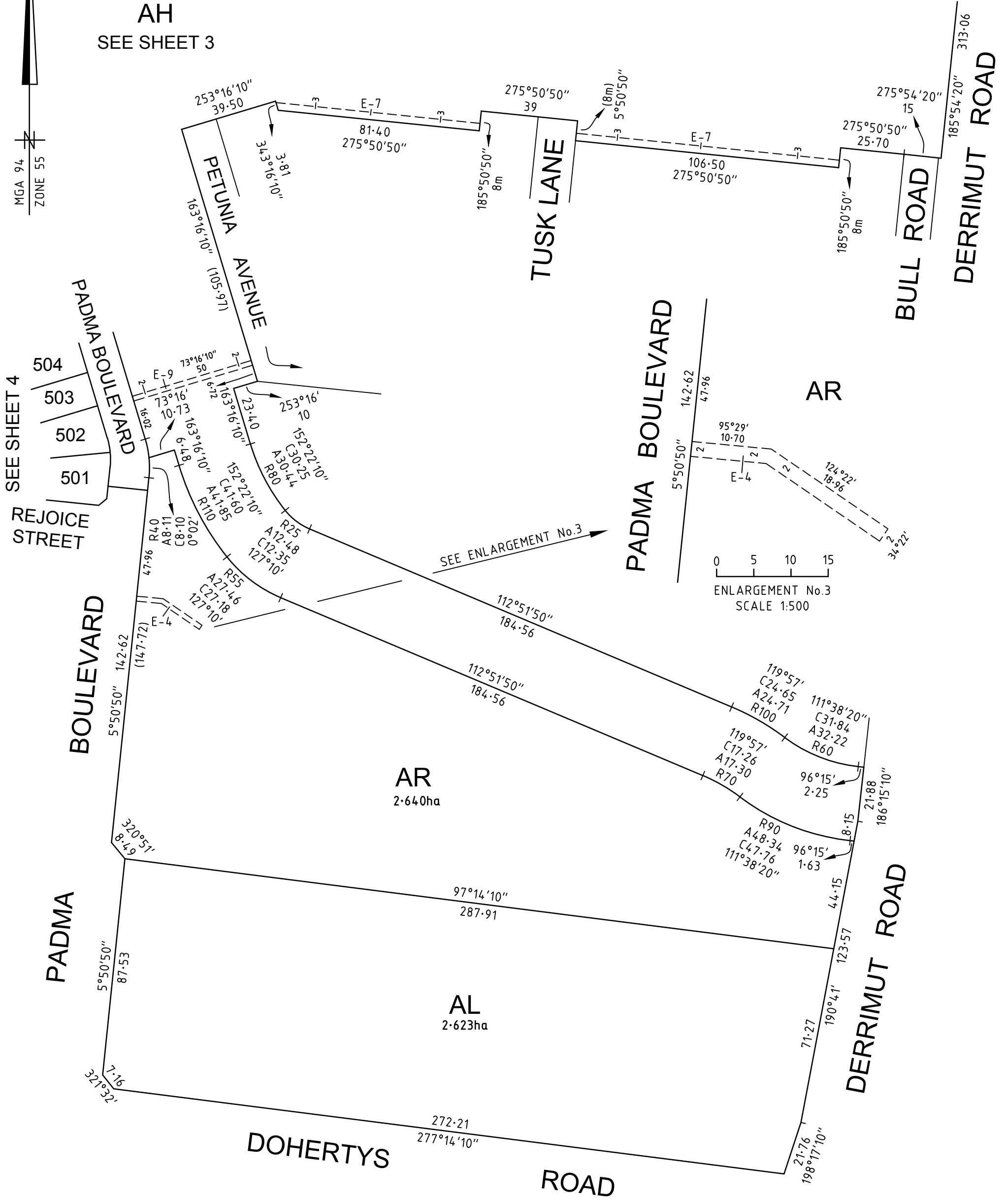
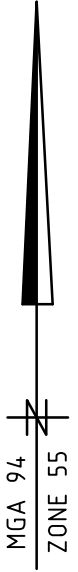
SHEET 6

ANTONY WYATT VERSION E

PLAN OF SUBDIVISION

PLAN NUMBER
PS830845N

AH
SEE SHEET 3



SEE SHEET 4

REJOICE STREET

PADMA BOULEVARD

PADMA BOULEVARD

DOHERTYS ROAD

ROAD

PADMA BOULEVARD

TUSK LANE

PETUNIA AVENUE

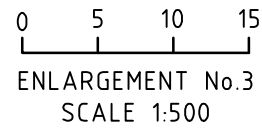
BULL ROAD

DERRIMUT ROAD

AR
2.640ha

AL
2.623ha

AR



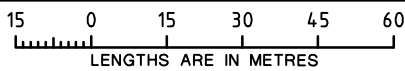
2360S-05 VER E.DWG MV/BC



Member of the Surbana Jurong Group

REF 2360s-05

SCALE
1:1500



ANTONY WYATT

VERSION E

ORIGINAL SHEET
SIZE: A3

SHEET 7

CREATION OF RESTRICTION A

The following Restriction is to be created upon registration of Plan of Subdivision PS830845N by way of a restrictive covenant and as a restriction as defined in the Subdivision Act 1988.

Table of Land Burdened and Land Benefited:

BURDENED LOT No.	BENEFITING LOTS
501	502
502	501, 503, 505
503	502, 504, 505
504	503, 505
505	502, 503, 504, 506
506	505, 507
507	506, 508
508	507, 509
509	508, 510
510	509, 511
511	510, 512
512	511, 513
513	512, 514
514	513, 515
515	514, 516
516	515
517	518, 543
518	517, 519, 542, 543
519	518, 520, 541, 542
520	519, 521, 540, 541
521	520, 522, 539, 540
522	521, 523, 538, 539
523	522, 524, 537, 538
524	523, 525, 536, 537
525	524, 526, 536
526	525, 536
527	528

BURDENED LOT No.	BENEFITING LOTS
528	527, 529
529	528, 530
530	529, 531
531	530, 532
532	531, 533
533	532, 534
534	533, 535
535	534
536	524, 525, 526, 537
537	523, 524, 536, 538
538	522, 523, 537, 539
539	521, 522, 538, 540
540	520, 521, 539, 541
541	519, 520, 540, 542
542	518, 519, 541, 543
543	517, 518, 542
544	545
545	544, 546
546	545, 547
547	546, 548
548	547, 549
549	548, 550
550	549, 551, 552, 553
551	550, 552
552	550, 551, 553
553	550, 552

DESCRIPTION OF RESTRICTION

The registered proprietor or proprietors for the time being of any burdened lot on the Plan of Subdivision must not without the consent of the Responsible Authority build or allow to be built on the lot:

Memorandum of Common Provisions (MCP)

- Any building other than a building which has been constructed and sited in accordance with the Memorandum of Common Provisions registered in Dealing No. AA4937 and which Memorandum of Common Provisions is incorporated in this plan.

Small Lot Housing Code

- Any building in the case of lots less than 300 square metres unless in accordance with the Small Lot Housing Code which for Lots 527 to 535 (both inclusive) are Type B Lots, unless a specific Planning Permit for the building has been obtained from Wyndham City Council.

The restrictions in paragraphs 1 and 2 shall cease to burden any lot on the Plan of Subdivision after 1st January 2031.



SMEC

Member of the Surbana Jurong Group

2360S-05 VER E.DWG MV/BC

REF 2360s-05

ANTONY WYATT

VERSION E

ORIGINAL SHEET
SIZE: A3

SHEET 8