

PLAN OF SUBDIVISION

LUV USE ONLY
EDITION

PLAN NUMBER
PS847495U

LOCATION OF LAND

COUNCIL NAME: WYNDHAM CITY COUNCIL

PARISH: TARNEIT
TOWNSHIP: -
SECTION: 22
CROWN ALLOTMENT: -
CROWN PORTION: D (PART)
TITLE REFERENCES: Vol. Fol.
LAST PLAN REFERENCE/S: PS830845N (LOT AH)
POSTAL ADDRESS: DERRIMUT ROAD
(At time of subdivision) TARNEIT 3029
MGA94 Co-ordinates E 296 920
(of approx centre of N 5 812 220
land in plan) ZONE 55

VESTING OF ROADS AND/OR RESERVES

NOTATIONS

| IDENTIFIER | COUNCIL/BODY/PERSON |
|--------------|----------------------|
| ROAD R1 | WYNDHAM CITY COUNCIL |
| ROAD R2 | ROADS CORPORATION |
| RESERVE No.1 | WYNDHAM CITY COUNCIL |
| RESERVE No.2 | WYNDHAM CITY COUNCIL |

LOTS 1 TO 1000 (BOTH INCLUSIVE) HAVE BEEN OMITTED FROM THIS PLAN.
LOTS ON THIS PLAN MAY BE AFFECTED BY ONE OR MORE RESTRICTIONS.
SEE SHEET 11 FOR FURTHER DETAILS.

NOTATIONS

DEPTH LIMITATION: DOES NOT APPLY
STAGING: THIS IS NOT A STAGED SUBDIVISION.
PLANNING PERMIT No.
SURVEY: THIS PLAN IS BASED ON SURVEY.
THIS SURVEY HAS BEEN CONNECTED TO PERMANENT MARKS No(s):
PM 90 (TARNEIT), PM158 & PM159 (TRUGANINA)
PROCLAIMED SURVEY AREA:

MARIGOLD 10
3.888ha

74 LOTS

EASEMENT INFORMATION

LEGEND A-Appurtenant Easement E-Encumbering Easement R-Encumbering Easement (Road)

| Easement Reference | Purpose | Width (Metres) | Origin | Land Benefited/In Favour Of |
|------------------------------|---|----------------------|----------------------------|---|
| E-1 | ELECTRICITY SUPPLY | SEE PLAN | INST. A773783 | STATE ELECTRICITY COMMISSION OF VICTORIA |
| E-2 | ELECTRICITY SUPPLY WATER SUPPLY (AS SETOUT IN MEMORANDUM OF COMMON PROVISIONS MCP No. AA1195) | 5 5 | INST. A773783 PS820469W | STATE ELECTRICITY COMMISSION OF VICTORIA MELBOURNE WATER CORPORATION |
| E-3 | DRAINAGE SEWERAGE | SEE PLAN SEE PLAN | PS830835R PS830835R | WYNDHAM CITY COUNCIL CITY WEST WATER CORPORATION |
| E-4 | WAY | SEE PLAN | PS820469W | WYNDHAM CITY COUNCIL |
| E-5 | DRAINAGE SEWERAGE | SEE PLAN SEE PLAN | PS830845N PS830845N | WYNDHAM CITY COUNCIL CITY WEST WATER CORPORATION |
| SEE SHEET 2 FOR CONTINUATION | | | | |

2360S-10 VER D.DWG BC/BC



SURVEYOR REF: **2360s-10**

ORIGINAL SHEET
SIZE: A3

SHEET 1 OF 11

DUNCAN BROOKS

VERSION D

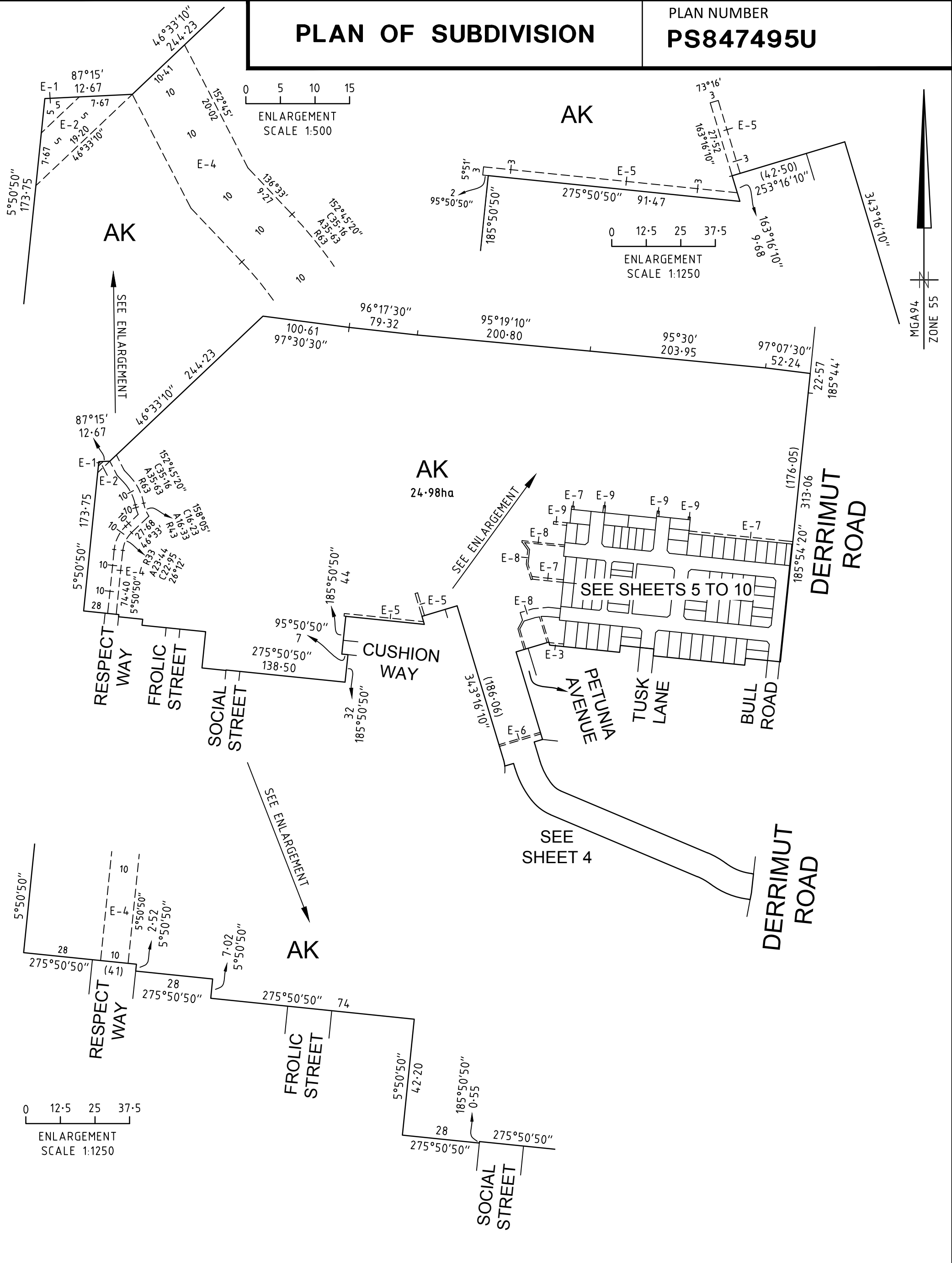
PLAN OF SUBDIVISION

PLAN NUMBER
PS847495U

| Easement Reference | Purpose | Width (Metres) | Origin | Land Benefited/In Favour Of |
|--------------------|----------------------|----------------------|------------------------|---|
| E-6 | SEWERAGE | SEE PLAN | PS841631W | CITY WEST WATER CORPORATION |
| E-7 | DRAINAGE SEWERAGE | SEE PLAN SEE PLAN | THIS PLAN THIS PLAN | WYNDHAM CITY COUNCIL CITY WEST WATER CORPORATION |
| E-8 | DRAINAGE | SEE PLAN | THIS PLAN | WYNDHAM CITY COUNCIL |
| E-9 | SEWERAGE | SEE PLAN | THIS PLAN | CITY WEST WATER CORPORATION |

PLAN OF SUBDIVISION

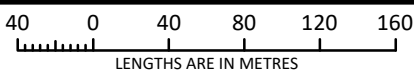
PLAN NUMBER
PS847495U



2360S-10 VER D.DWG BC/BC



SCALE
1:4000



ORIGINAL SHEET
SIZE: A3

SHEET 3

DUNCAN BROOKS

VERSION D

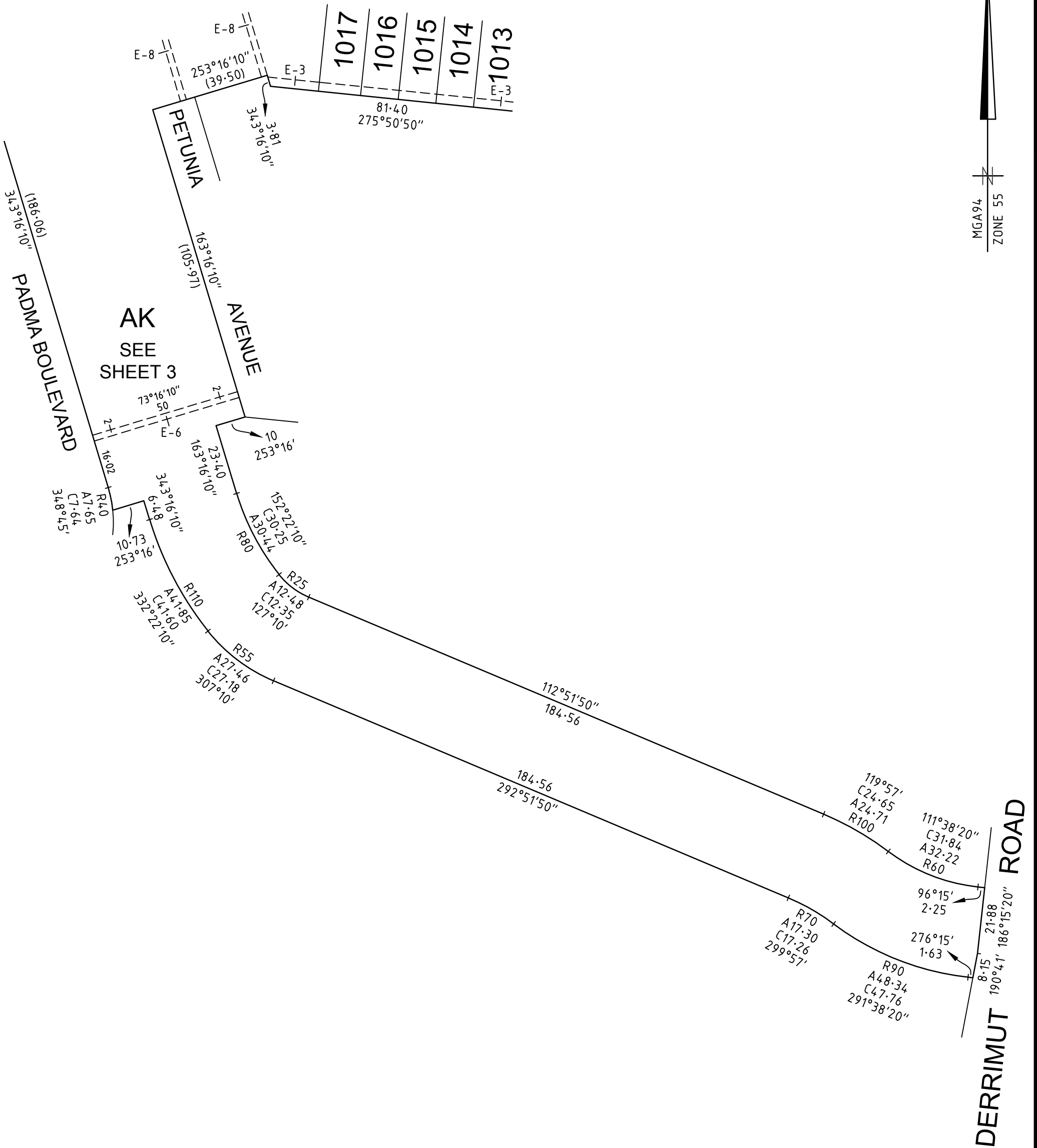
Melbourne Survey T 9869 0813

REF 2360S-10

PLAN OF SUBDIVISION

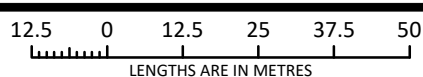
PLAN NUMBER
PS847495U

SEE SHEET 6



2360S-10 VER D.DWG BC/BC

SCALE
1:1250



ORIGINAL SHEET
SIZE: A3

SHEET 4

Melbourne Survey T 9869 0813

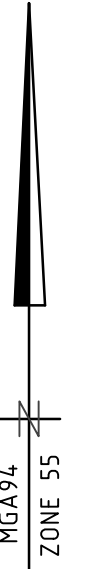
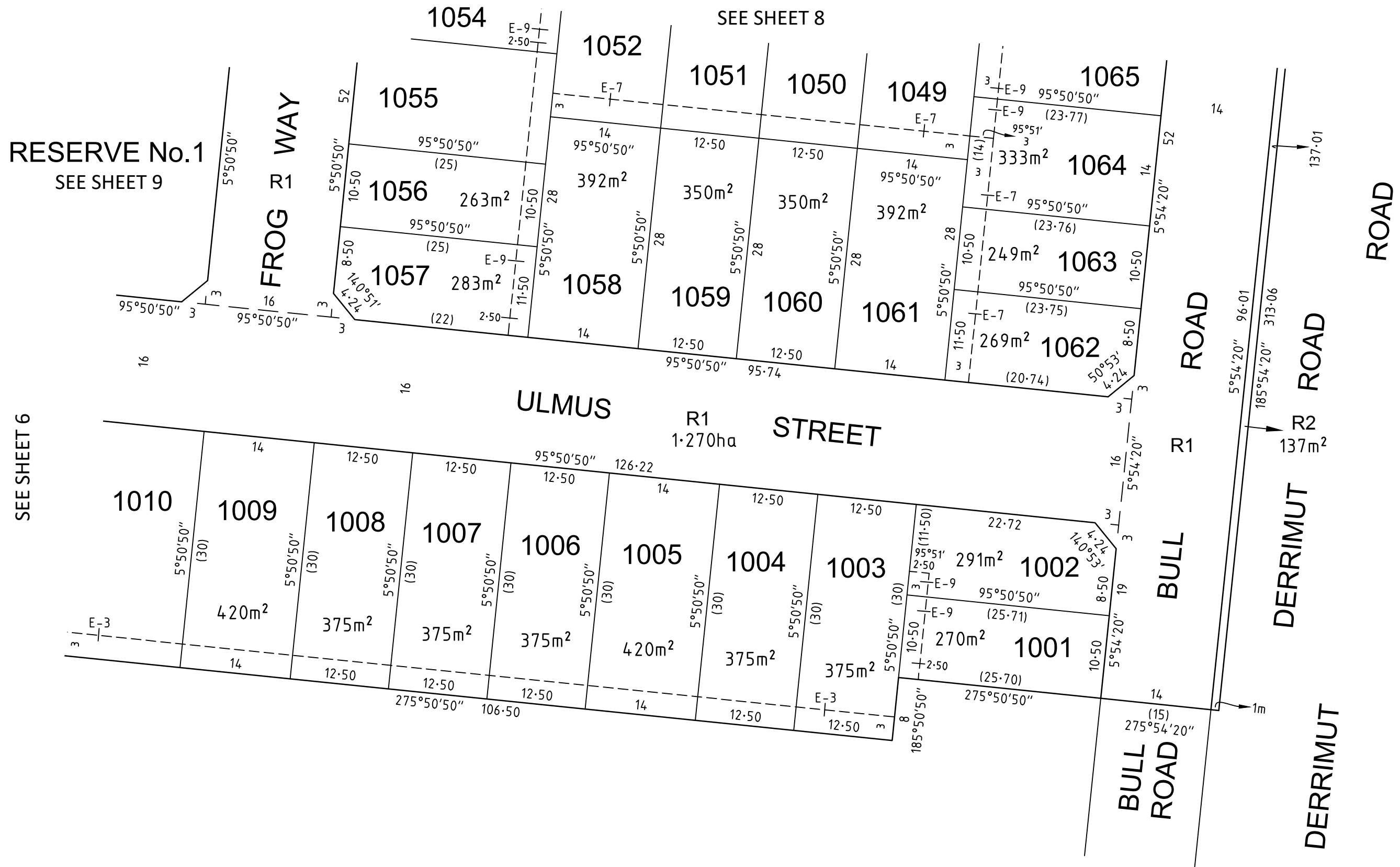
REF 2360s-10

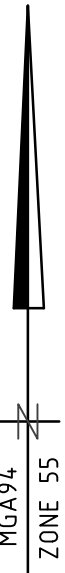
DUNCAN BROOKS

VERSION D

PLAN OF SUBDIVISION

PLAN NUMBER
PS847495U





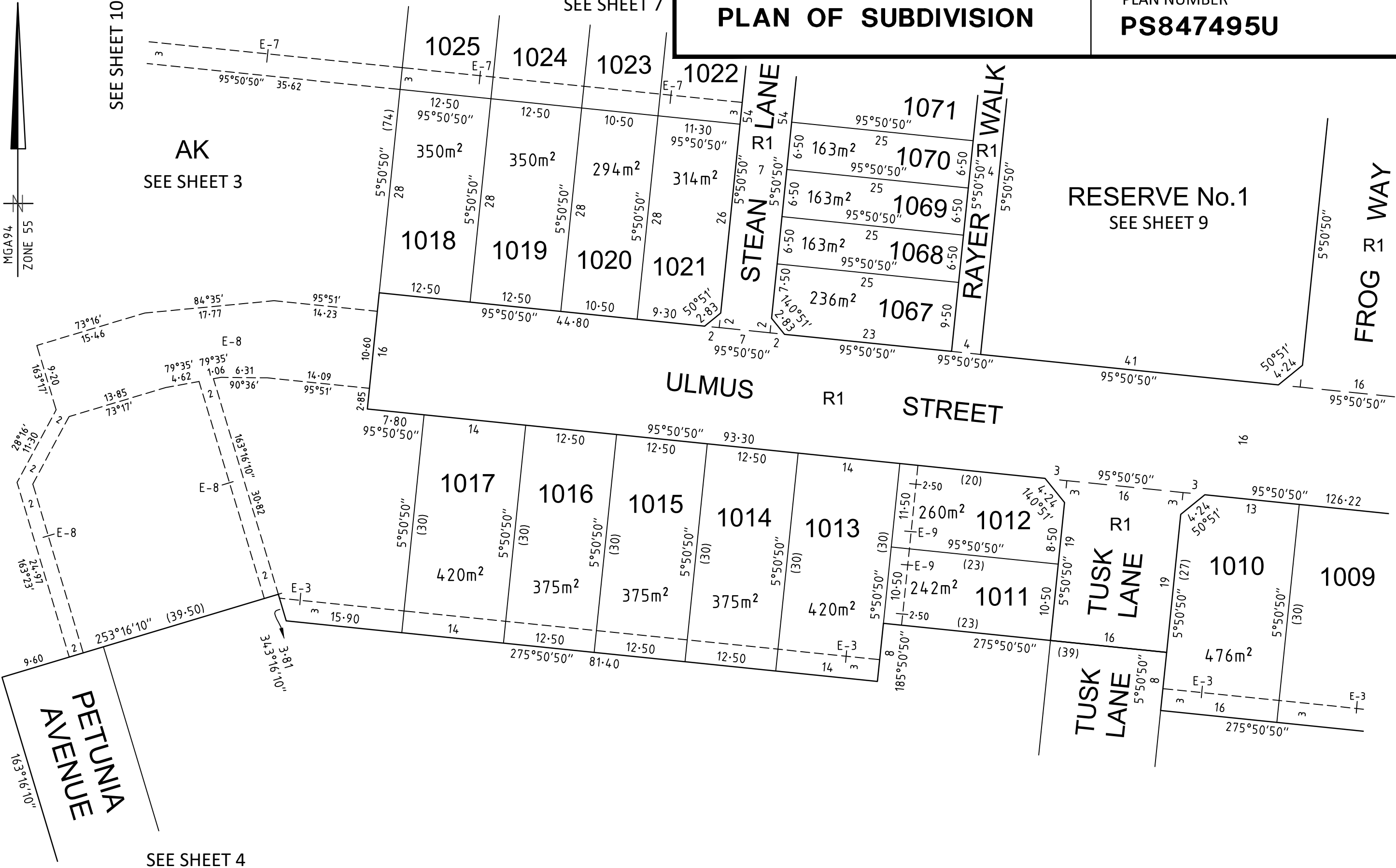
SEE SHEET 10

AK
SEE SHEET 3

SEE SHEET 7

PLAN OF SUBDIVISION

PLAN NUMBER
PS847495U



FROG R WAY

RESERVE No.1
SEE SHEET 9

ULMUS STREET

STEAN LANE

RAYER WALK

TUSK LANE

PETUNIA AVENUE

SEE SHEET 4

SEE SHEET 5



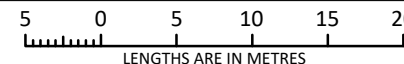
SMEC

2360S-10 VER D.DWG BC/BC

Melbourne Survey T 9869 0813

REF 2360s-10

SCALE
1:500



ORIGINAL SHEET
SIZE A3

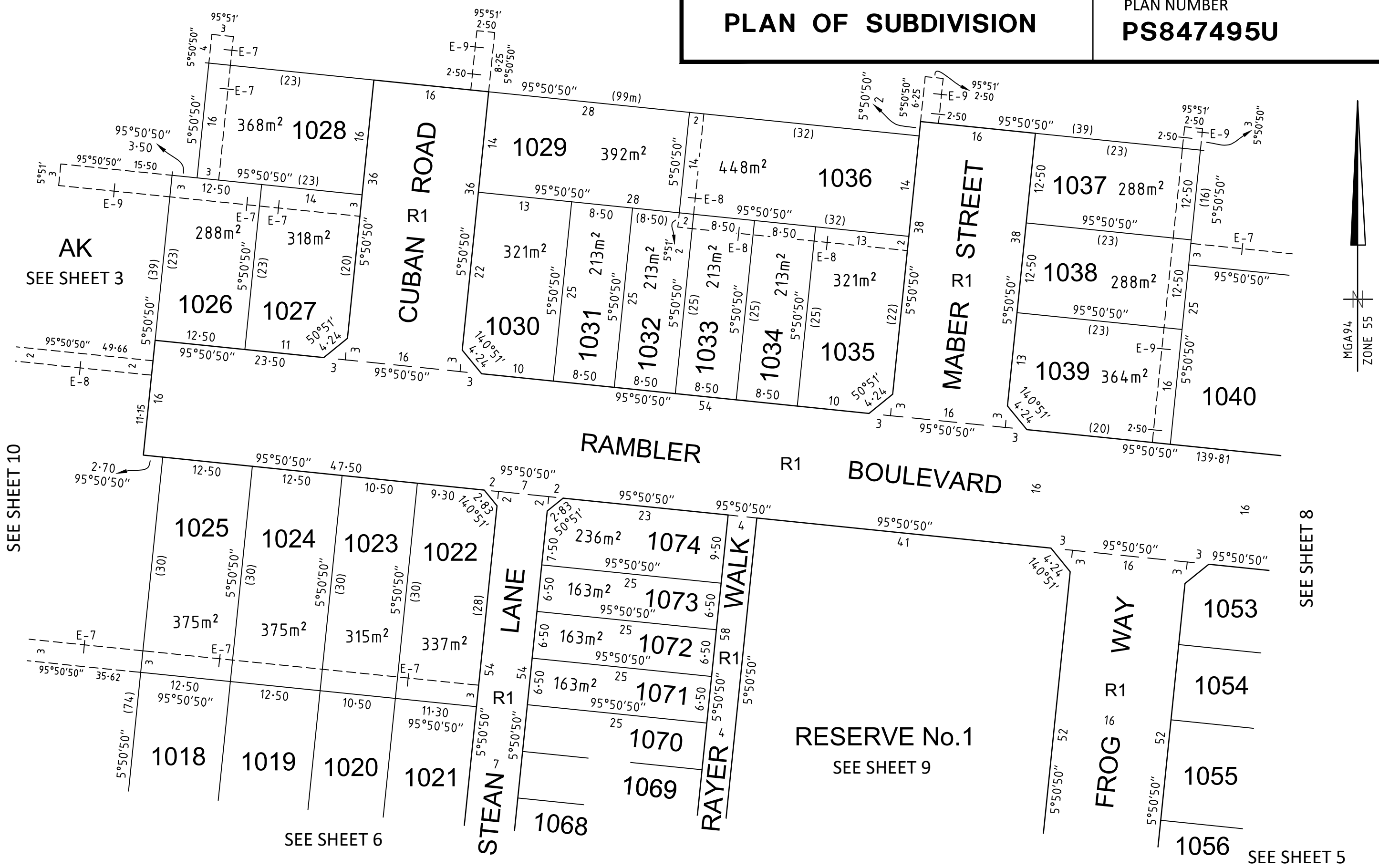
SHEET 6

DUNCAN BROOKS

VERSION D

PLAN OF SUBDIVISION

PLAN NUMBER
PS847495U



2360S-10 VER D.DWG BC/BC

Melbourne Survey T 9869 0813 REF 2360s-10

SCALE
1:500

LENGTHS ARE IN METRES

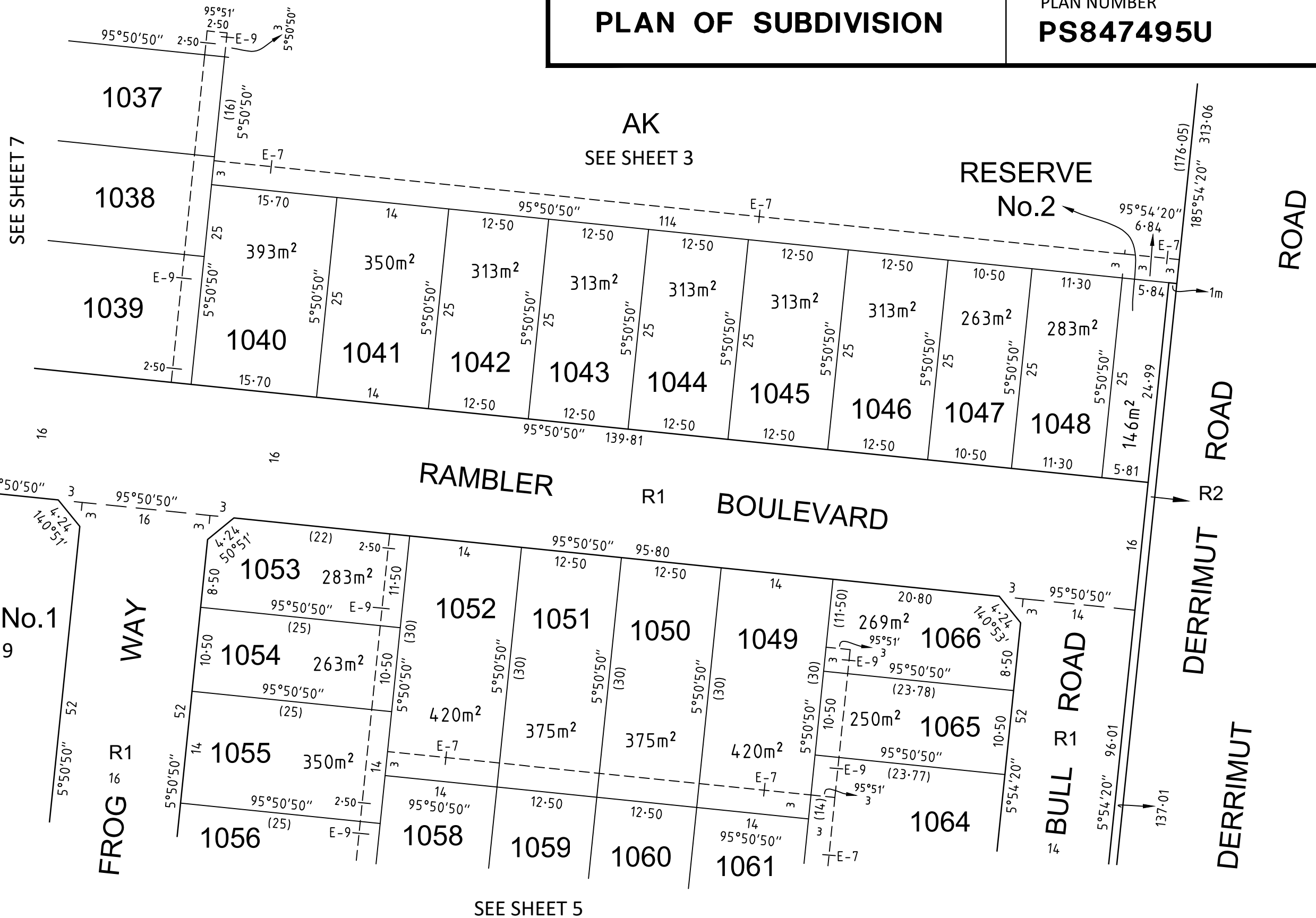
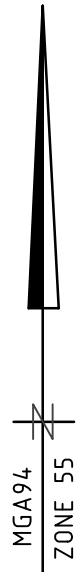
ORIGINAL SHEET
SIZE A3

SHEET 7

DUNCAN BROOKS VERSION D

PLAN OF SUBDIVISION

PLAN NUMBER
PS847495U



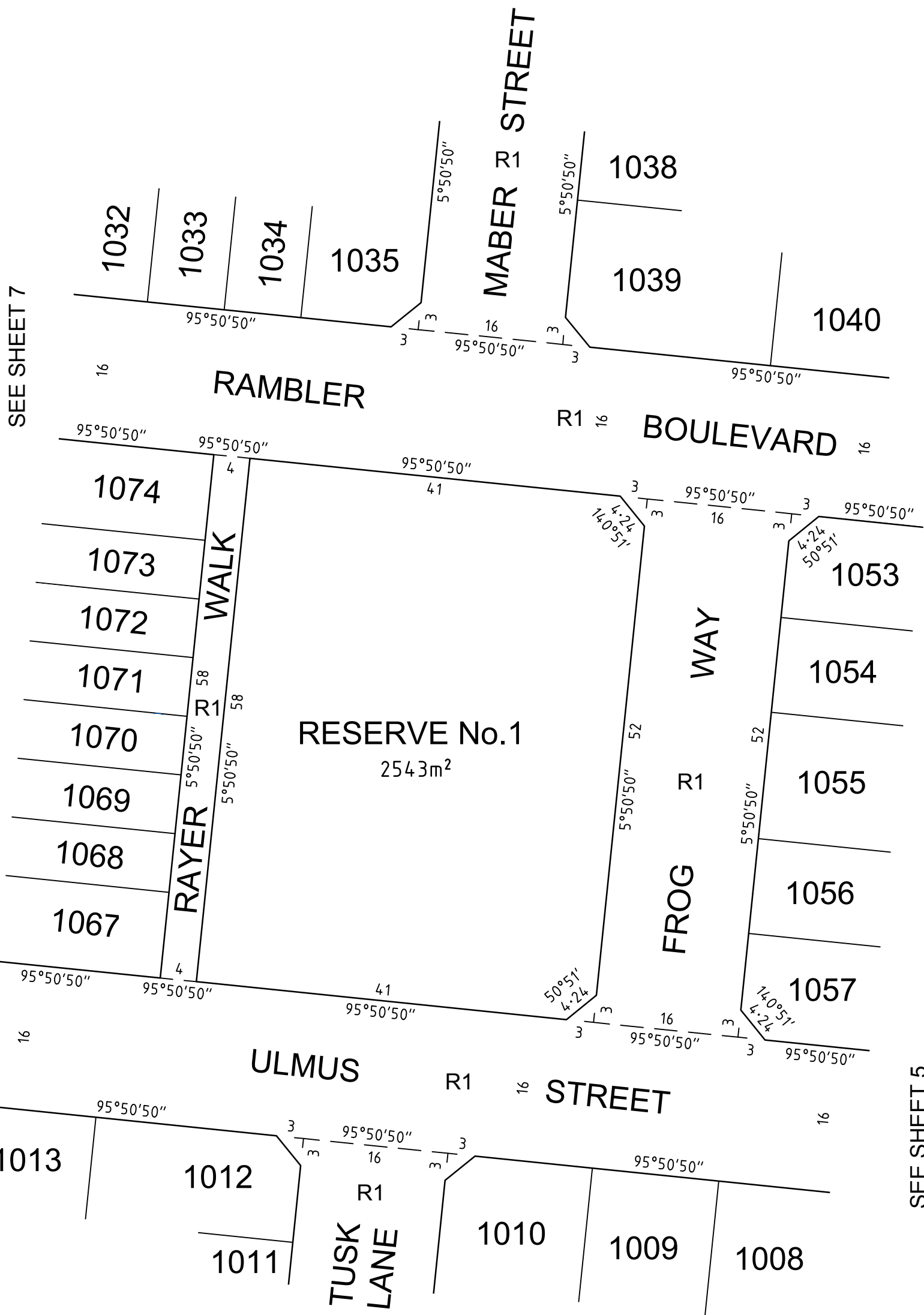
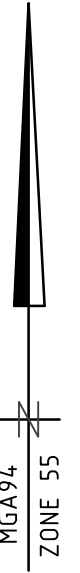
RESERVE No.1
SEE SHEET 9

SEE SHEET 5

PLAN OF SUBDIVISION

PLAN NUMBER
PS847495U

SEE SHEET 7



SEE SHEET 6

SEE SHEET 8

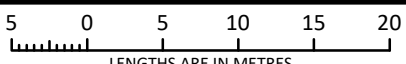
SEE SHEET 5

SEE SHEET 6



2360S-10 VER D.DWG BC/BC

SCALE
1:500



ORIGINAL SHEET
SIZE: A3

SHEET 9

Melbourne Survey T 9869 0813

REF 2360S-10

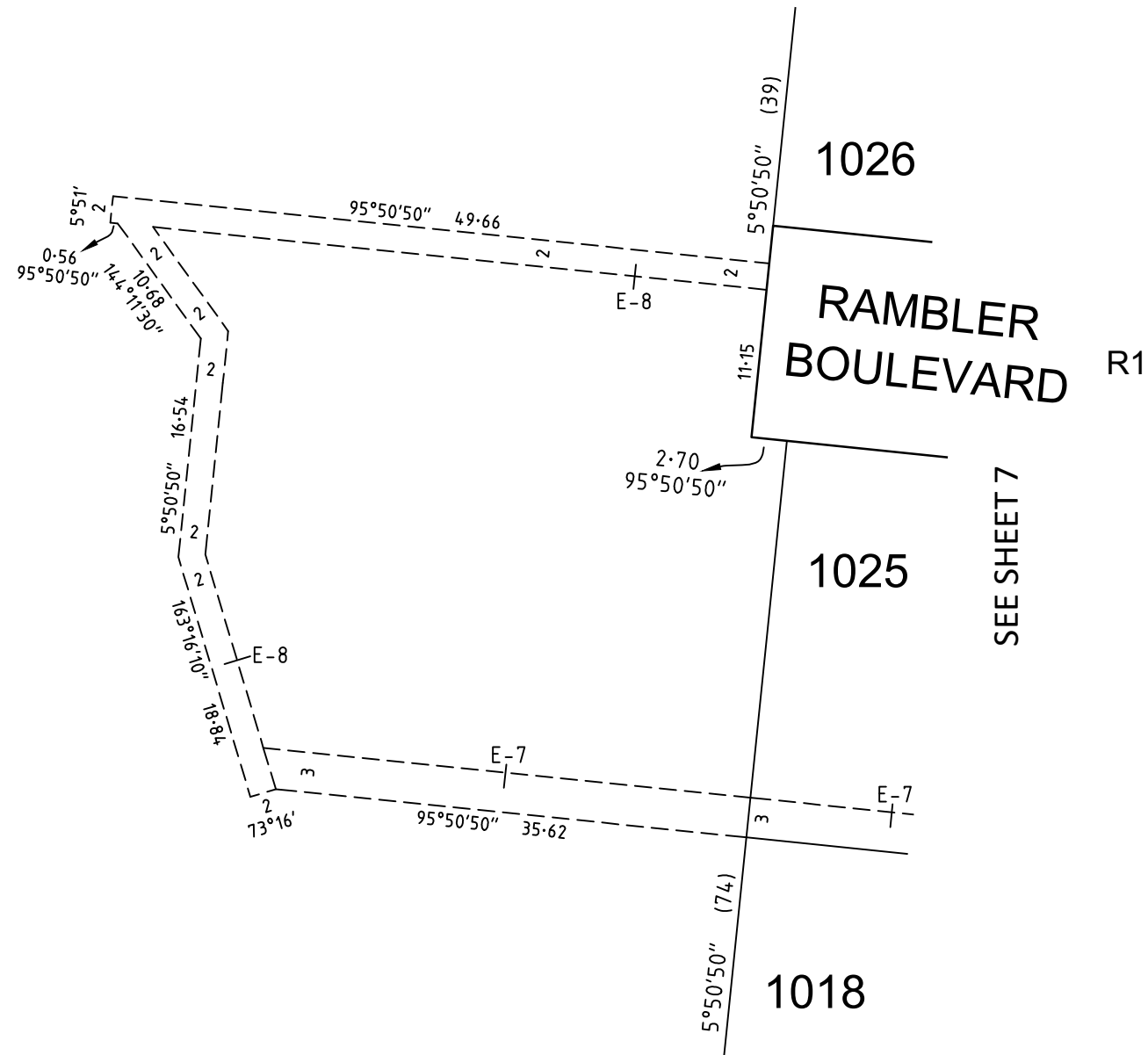
DUNCAN BROOKS

VERSION D

PLAN OF SUBDIVISION

PLAN NUMBER
PS847495U

AK
SEE SHEET 3



SEE SHEET 7

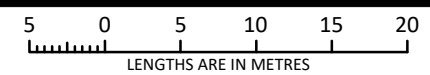


2360S-10 VER D.DWG BC/BC

Melbourne Survey T 9869 0813

REF 2360s-10

SCALE
1:500



ORIGINAL SHEET
SIZE A3

SHEET 10

DUNCAN BROOKS

VERSION D

PLAN OF SUBDIVISION

PLAN NUMBER
PS847495U

CREATION OF RESTRICTION A

The following Restriction is to be created upon registration of Plan of Subdivision PS847495U by way of a restrictive covenant and as a restriction as defined in the Subdivision Act 1988.

Table of Land Burdened and Land Benefited:

| BURDENED LOT No. | BENEFITING LOTS |
|------------------|------------------------------|
| 1001 | 1002, 1003 |
| 1002 | 1001, 1003 |
| 1003 | 1001, 1002, 1004 |
| 1004 | 1003, 1005 |
| 1005 | 1004, 1006 |
| 1006 | 1005, 1007 |
| 1007 | 1006, 1008 |
| 1008 | 1007, 1009 |
| 1009 | 1008, 1010 |
| 1010 | 1009 |
| 1011 | 1012, 1013 |
| 1012 | 1011, 1013 |
| 1013 | 1011, 1012, 1014 |
| 1014 | 1013, 1015 |
| 1015 | 1014, 1016 |
| 1016 | 1015, 1017 |
| 1017 | 1016 |
| 1018 | 1019, 1025 |
| 1019 | 1018, 1020, 1024 |
| 1020 | 1019, 1021, 1023 |
| 1021 | 1020, 1022 |
| 1022 | 1021, 1023 |
| 1023 | 1020, 1022, 1024 |
| 1024 | 1019, 1023, 1025 |
| 1025 | 1018, 1024 |
| 1026 | 1027, 1028 |
| 1027 | 1026, 1028 |
| 1028 | 1026, 1027 |
| 1029 | 1030, 1031, 1032, 1036 |
| 1030 | 1029, 1031 |
| 1031 | 1029, 1030, 1032 |
| 1032 | 1029, 1031, 1033, 1036 |
| 1033 | 1032, 1034, 1036 |
| 1034 | 1033, 1035, 1036 |
| 1035 | 1034, 1036 |
| 1036 | 1029, 1032, 1033, 1034, 1035 |
| 1037 | 1038 |

| BURDENED LOT No. | BENEFITING LOTS |
|------------------|------------------------------|
| 1038 | 1037, 1039, 1040 |
| 1039 | 1038, 1040 |
| 1040 | 1038, 1039, 1041 |
| 1041 | 1040, 1042 |
| 1042 | 1041, 1043 |
| 1043 | 1042, 1044 |
| 1044 | 1043, 1045 |
| 1045 | 1044, 1046 |
| 1046 | 1045, 1047 |
| 1047 | 1046, 1048 |
| 1048 | 1047 |
| 1049 | 1050, 1061, 1064, 1065, 1066 |
| 1050 | 1049, 1051, 1060 |
| 1051 | 1050, 1052, 1059 |
| 1052 | 1051, 1053, 1054, 1055, 1058 |
| 1053 | 1052, 1054 |
| 1054 | 1052, 1053, 1055 |
| 1055 | 1052, 1054, 1056, 1058 |
| 1056 | 1055, 1057, 1058 |
| 1057 | 1056, 1058 |
| 1058 | 1052, 1055, 1056, 1057, 1059 |
| 1059 | 1051, 1058, 1060 |
| 1060 | 1050, 1059, 1061 |
| 1061 | 1049, 1060, 1062, 1063, 1064 |
| 1062 | 1061, 1063 |
| 1063 | 1061, 1062, 1064 |
| 1064 | 1049, 1061, 1063, 1065 |
| 1065 | 1049, 1064, 1066 |
| 1066 | 1049, 1065 |
| 1067 | 1068 |
| 1068 | 1067, 1069 |
| 1069 | 1068, 1070 |
| 1070 | 1069, 1071 |
| 1071 | 1070, 1072 |
| 1072 | 1071, 1073 |
| 1073 | 1072, 1074 |
| 1074 | 1073 |

DESCRIPTION OF RESTRICTION

The registered proprietor or proprietors for the time being of any burdened lot on the Plan of Subdivision must not without the consent of the Responsible Authority build or allow to be built on the lot:

Memorandum of Common Provisions (MCP)

- Any building other than a building which has been constructed and sited in accordance with the Memorandum of Common Provisions registered in Dealing No. AA4937 and which Memorandum of Common Provisions is incorporated in this plan.

Small Lot Housing Code

- Any building in the case of lots less than 300 square metres unless in accordance with the Small Lot Housing Code which:
 - for Lots 1001, 1002, 1011, 1012, 1020, 1026, 1037, 1038, 1047 and 1048 are Type A Lots,
 - for Lots 1031 to 1034 (both inclusive), 1053, 1054, 1056, 1057, 1062, 1063 and 1065 and 1067 to 1074 (both inclusive) are Type B Lots

unless a specific Planning Permit for the building has been obtained from Wyndham City Council.

The restrictions in paragraphs 1 and 2 shall cease to burden any lot on the Plan of Subdivision after 1st January 2031.