

# Marigold Estate Stage 1 Landscape Plans

Wyndham City Council



### WARNING

**BEWARE OF UNDERGROUND SERVICES**  
Note that the location shown of existing underground services is indicative only and may not be accurate at the time of landscape works. No guarantee is given that all existing services are shown. Determination of the exact position and extent of underground services is the responsibility of the Contractor and is to be confirmed on site prior to commencement of work.

### GENERAL NOTES

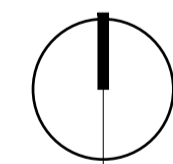
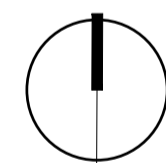
- Before commencement of works it is the responsibility of the Landscape Contractor to contact dial before you dig (ph. 1100 or web 1100.com.au) for information on services in the area shown on the plan.
- The Contractor shall verify the location and depth of all services prior to commencing on site.
- The Contractor shall be liable for any damage to services during landscape works.
- The Contractor shall verify the location of any existing trees shown to be retained and protect them during works.
- All trees shall be planted in locations shown on the plan.
- Any change to plant species must have the approval of the Landscape Architect.
- Trees shall be planted no less than the following distances from landscape elements:  
Footpaths: 1.2m      Driveways and crossings: 2.5m  
Stormwater & sewerage pits: 2.0m      Intersections: 10.0m  
Service crossings: 1.5m      Kerb & channel: 2.0m  
Street lights: 2.5m (Powercor standard offset)
- Construction certification for all structural elements is to be provided prior to practical completion being granted.

### DRAWING SCHEDULE

dwg #	dwg title	Revision
L000	Cover Sheet	D
L100	Planting Plan 01	D
L101	Planting Plan 02	D
L102	Planting Plan 03	D
L200	Landscape Details and Plant Schedule	D



LOCATION PLAN N.T.S.



Scale (metres) As Shown @ A1

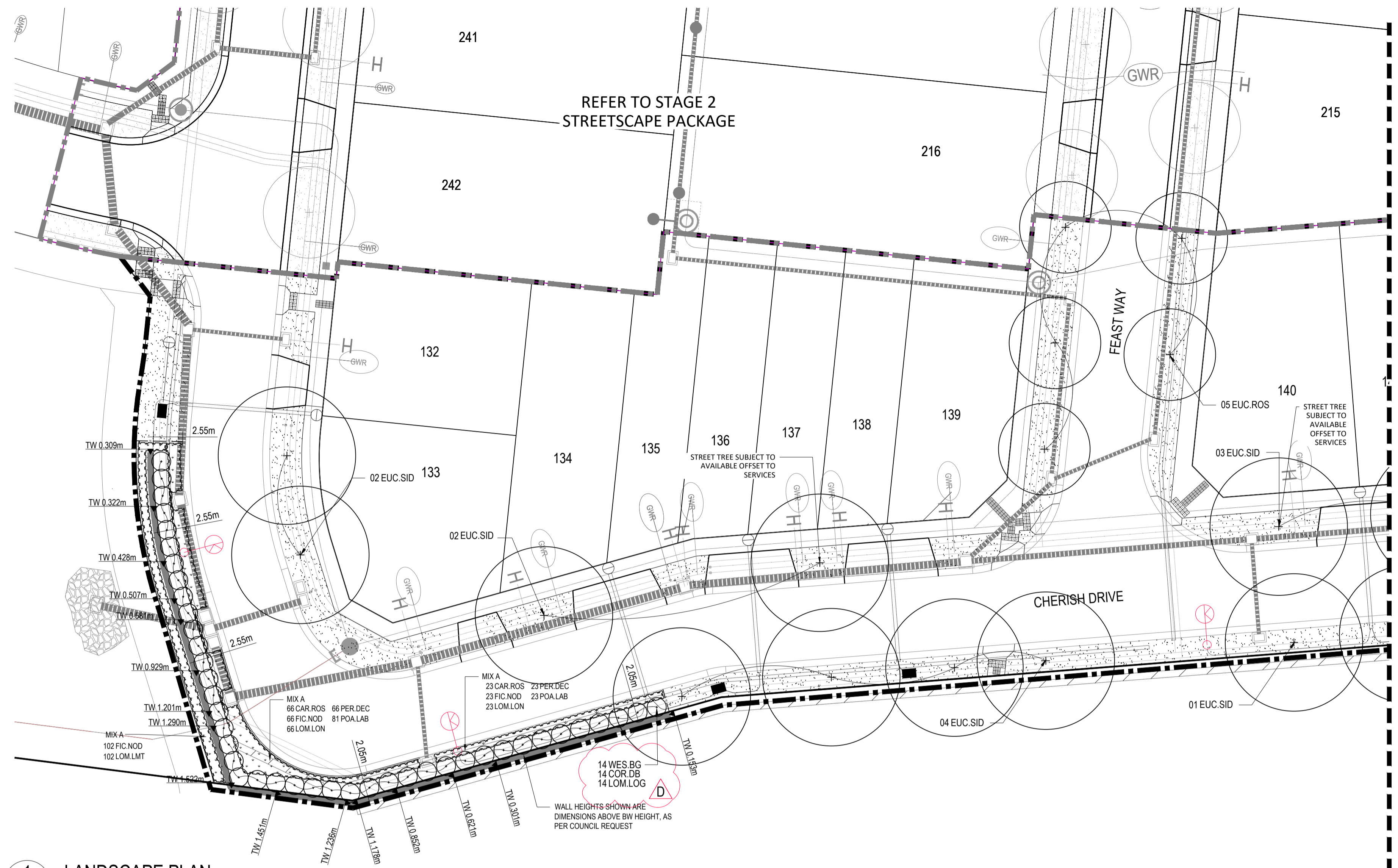


Growland  
Marigold Estate  
Stage 1

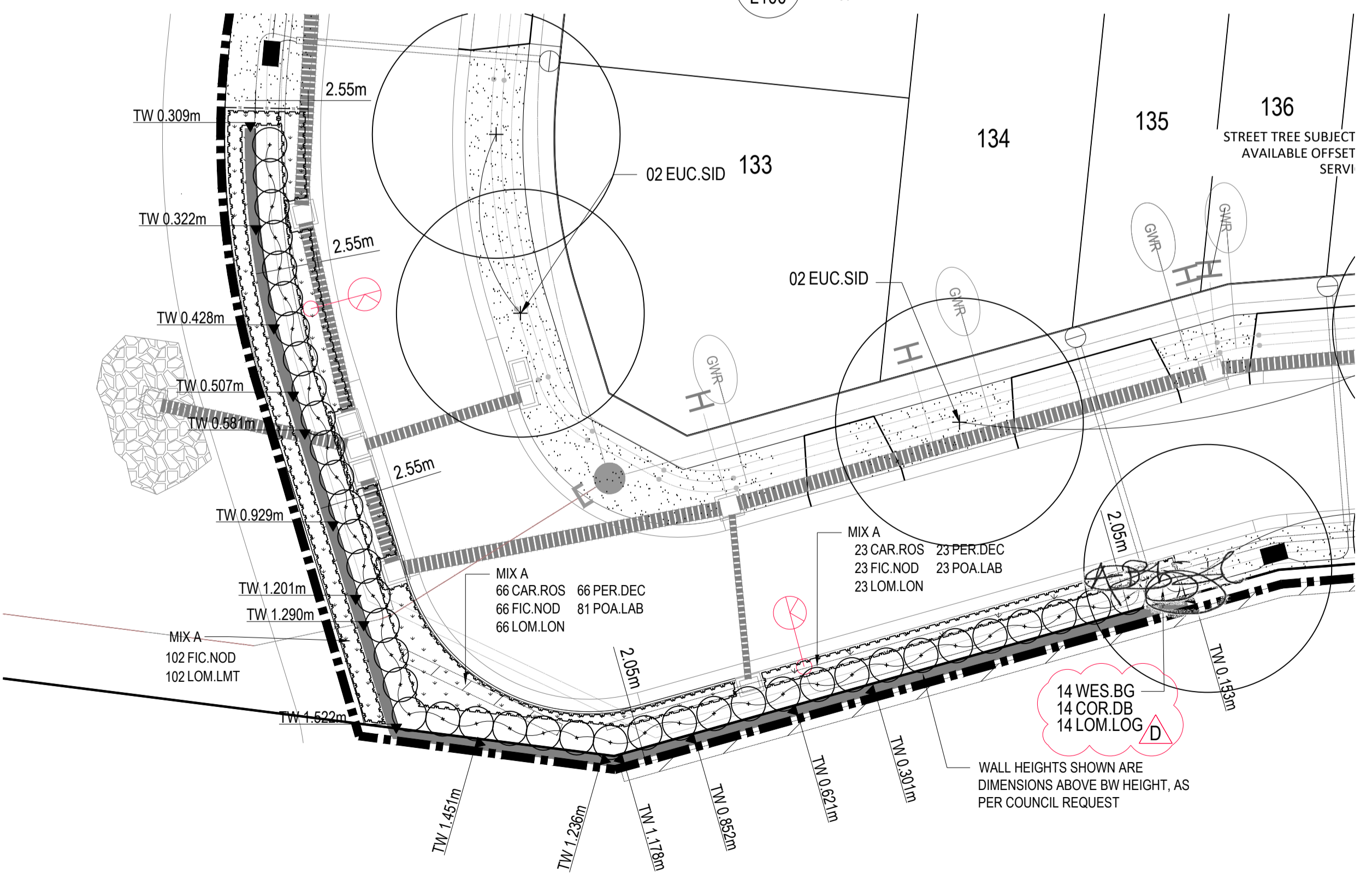
Cover Sheet

Designed	S.L.	Drawn	S.L.
Checked	J.D.	Approved	J.D.
Status	For Approval		
Date	Feb-20	Scale	As Shown
Job No.	30042360L.01	Sheet No.	1 of 5
Drawing No.	L000	Revision	D

**Planning and Environment Act 1987  
Wyndham Planning Scheme  
Landscape Plan No. LS3328/19  
WYP10365/17 WYS4907/18  
Plan 1 of 5  
Date 14/04/2020**



**1 LANDSCAPE PLAN**  
L100 1:250



**2 LANDSCAPE PLAN**  
L100 1:200

**LEGEND**

- STAGE BOUNDARY
- PROPOSED TREE  
Refer plant schedule, details & specification
- PROPOSED GRASSING  
Refer details & specification
- PROPOSED PLANTING  
Refer details & specification
- TIMBER EDGE  
Refer details & specification
- RETAINING WALL  
Refer to detail & engineering plans
- ROAD SIGNAGE  
Refer to engineering plans

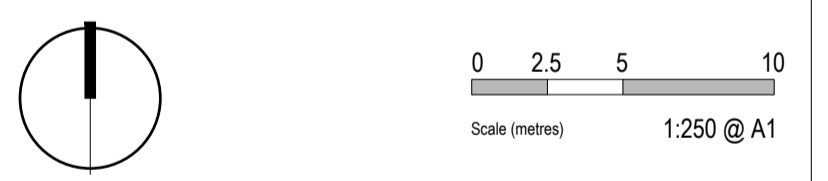


**WARNING**  
**BEWARE OF UNDERGROUND SERVICES**

Note that the location shown of existing underground services is indicative only and may not be accurate at the time of landscape works. No guarantee is given that all existing services are shown. Determination of the exact position and extent of underground services is the responsibility of the Contractor and is to be confirmed on site prior to commencement of work.

- GENERAL NOTES**
- Before commencement of works it is the responsibility of the Landscape Contractor to contact dial before you dig (ph. 1100 or web 1100.com.au) for information on services in the area shown on the plan.
  - The Contractor shall verify the location and depth of all services prior to commencing on site.
  - The Contractor shall be liable for any damage to services during landscape works.
  - The Contractor shall verify the location of any existing trees shown to be retained and protect them during works.
  - All trees shall be planted in locations shown on the plan.
  - Any change to plant species must have the approval of the Landscape Architect.
  - Trees shall be planted no less than the following distances from landscape elements:  
Footpaths: 1.2m Intersections: 2.5m  
Stormwater & sewerage pits: 2.0m Kerb & channel: 2.0m  
Service crossings: 1.5m  
Street lights: 2.5m (Powercor standard offset)
  - Construction certification for all structural elements is to be provided prior to practical completion being granted.

Revision	Description	Date	Drawn	Checked
D	RE-ISSUE FOR COUNCIL APPROVAL	20.03.20	AB	JD
C	RE-ISSUE FOR COUNCIL APPROVAL	14.02.20	AB	DB
B	ISSUED FOR COUNCIL APPROVAL	20.08.19	SL	JD
A	ISSUED FOR ELEC COORDINATION	09.04.19	SL	JD
-	ISSUED FOR COORDINATION	24.01.18	SL	JD



**SMEC**  
Member of the Surlana Jurgens Group

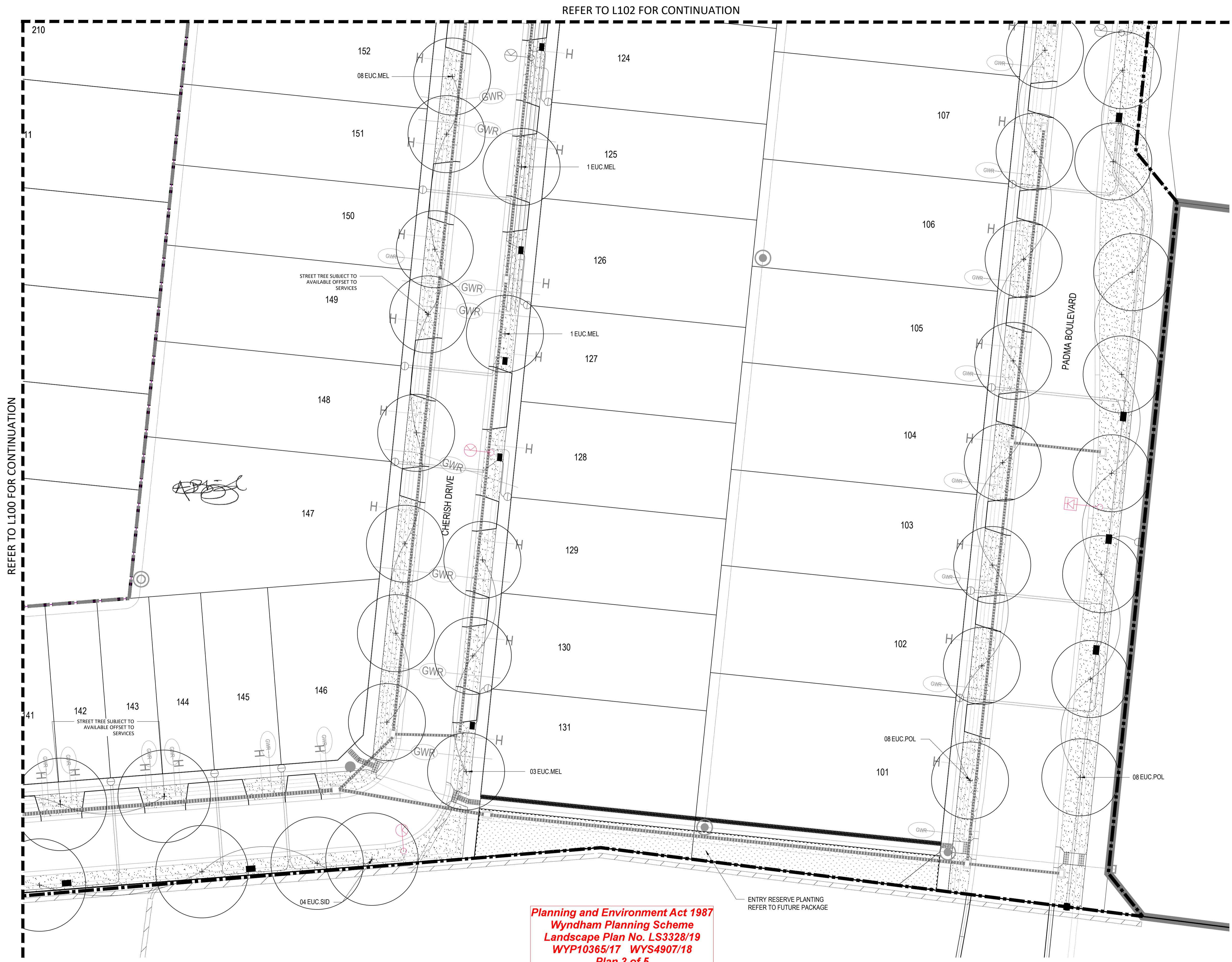
SMEC Australia Pty Ltd  
Tower 4, Level 20, 727 Collins Street  
Melbourne, VIC 3008, Australia  
PO Box 28277, Docklands,  
VIC 3002, Australia  
T +61 3 9514 1500 F +61 3 9514 1502  
E melbourne@smec.com  
www.smec.com

**Planning and Environment Act 1987**  
**Wyndham Planning Scheme**  
**Landscape Plan No. LS3328/19**  
**WYP10365/17 WYS4907/18**  
**Plan 2 of 5**  
**Date 14/04/2020**

**Growland**  
**Marigold Estate**  
Stage 1

Planting Plan 01

Designed	S.L.	Drawn	S.L.
Checked	J.D.	Approved	J.D.
Status	For Approval		
Date	Feb-20	Scale	1:250 @ A1
Job No.	30042360L.01	Sheet No.	2 of 5
Drawing No.	L100	Revision	D



REFER TO L102 FOR CONTINUATION

REFER TO L100 FOR CONTINUATION

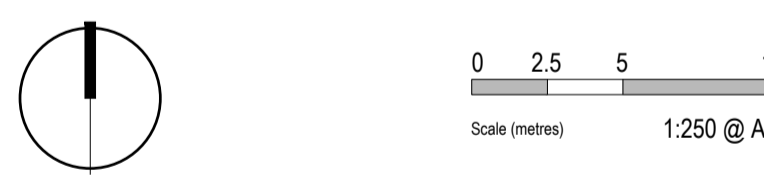
- LEGEND**
- STAGE BOUNDARY
  - PROPOSED TREE  
Refer plant schedule, details & specification
  - PROPOSED GRASSING  
Refer details & specification
  - PROPOSED PLANTING  
Refer details & specification
  - TIMBER EDGE  
Refer details & specification
  - RETAINING WALL  
Refer to detail & engineering plans
  - ROAD SIGNAGE  
Refer to engineering plans



**WARNING**  
**BEWARE OF UNDERGROUND SERVICES**  
 Note that the location shown of existing underground services is indicative only and may not be accurate at the time of landscape works. No guarantee is given that all existing services are shown. Determination of the exact position and extent of underground services is the responsibility of the Contractor and is to be confirmed on site prior to commencement of work.

- GENERAL NOTES**
1. Before commencement of works it is the responsibility of the Landscape Contractor to contact dial before you dig (ph. 1100 or web 1100.com.au) for information on services in the area shown on the plan.
  2. The Contractor shall verify the location and depth of all services prior to commencing on site.
  3. The Contractor shall be liable for any damage to services during landscape works.
  4. The Contractor shall verify the location of any existing trees shown to be retained and protect them during works.
  5. All trees shall be planted in locations shown on the plan.
  6. Any change to plant species must have the approval of the Landscape Architect.
  7. Trees shall be planted no less than the following distances from landscape elements:  
 Footpaths: 1.2m Stormwater & sewerage pits: 2.0m Driveways and crossings: 2.5m  
 Service crossings: 1.5m Kerb & channel: 2.0m Intersections: 10.0m  
 Street lights: 2.5m (Powercor standard offset)
  8. Construction certification for all structural elements is to be provided prior to practical completion being granted.

Revision	Description	Date	Drawn	Checked
D	RE-ISSUE FOR COUNCIL APPROVAL	20.03.20	AB	JD
C	RE-ISSUE FOR COUNCIL APPROVAL	14.02.20	AB	DB
B	ISSUED FOR COUNCIL APPROVAL	20.08.19	SL	JD
A	ISSUED FOR ELEC COORDINATION	09.04.19	SL	JD
-	ISSUED FOR COORDINATION	24.01.18	SL	JD



**SMEC**  
 Member of the Surlana Jurgens Group  
 Tower 4, Level 20, 727 Collins Street  
 Melbourne, VIC 3008, Australia  
 (PO Box 2827) Docklands, VIC 3002, Australia  
 T +61 3 9514 1500 F +61 3 9514 1502  
 E melbourne@smec.com www.smec.com

**Growland**  
**Marigold Estate**  
 Stage 1

**Planting Plan 02**

Designed S.L. Drawn S.L.  
 Checked J.D. Approved J.D.

Status For Approval

Date Feb-20 Scale 1:250 @ A1 Sheet No. 3 of 5

Job No. 30042360L.01 Drawing No. L101 Revision D

**Planning and Environment Act 1987**  
**Wyndham Planning Scheme**  
**Landscape Plan No. LS3328/19**  
**WYP10365/17 WYS4907/18**  
**Plan 3 of 5**  
**Date 14/04/2020**

ENTRY RESERVE PLANTING  
 REFER TO FUTURE PACKAGE

REFER TO L102 FOR CONTINUATION



REFER TO L100 FOR CONTINUATION

REFER TO STAGE 2 STREETScape PACKAGE

- LEGEND**
- STAGE BOUNDARY
  - + PROPOSED TREE  
Refer plant schedule, details & specification
  - ▨ PROPOSED GRASSING  
Refer details & specification
  - ▨ PROPOSED PLANTING  
Refer details & specification
  - T.E. --- TIMBER EDGE  
Refer details & specification
  - ▬ RETAINING WALL  
Refer to detail & engineering plans
  - ROAD SIGNAGE  
Refer to engineering plans

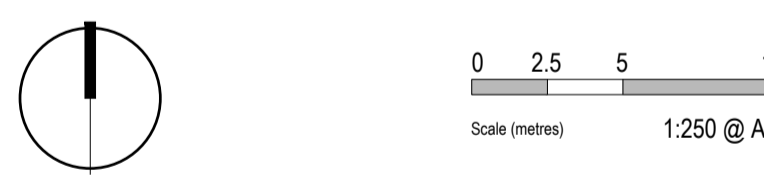


**WARNING**  
BEWARE OF UNDERGROUND SERVICES

Note that the location shown of existing underground services is indicative only and may not be accurate at the time of landscape works. No guarantee is given that all existing services are shown. Determination of the exact position and extent of underground services is the responsibility of the Contractor and is to be confirmed on site prior to commencement of work.

- GENERAL NOTES**
- Before commencement of works it is the responsibility of the Landscape Contractor to contact dial before you dig (ph. 1100 or web 1100.com.au) for information on services in the area shown on the plan.
  - The Contractor shall verify the location and depth of all services prior to commencing on site.
  - The Contractor shall be liable for any damage to services during landscape works.
  - The Contractor shall verify the location of any existing trees shown to be retained and protect them during works.
  - All trees shall be planted in locations shown on the plan.
  - Any change to plant species must have the approval of the Landscape Architect.
  - Trees shall be planted no less than the following distances from landscape elements:  
Footpaths: 1.2m      Driveways and crossings: 2.5m  
Stormwater & sewerage pits: 2.0m      Intersections: 10.0m  
Service crossings: 1.5m      Kerb & channel: 2.0m  
Street lights: 2.5m (Powercor standard offset)
  - Construction certification for all structural elements is to be provided prior to practical completion being granted.

Revision	Description	Date	Drawn	Checked
D	RE-ISSUE FOR COUNCIL APPROVAL	20.03.20	AB	JD
C	RE-ISSUE FOR COUNCIL APPROVAL	14.02.20	AB	DB
B	ISSUED FOR COUNCIL APPROVAL	20.08.19	SL	JD
A	ISSUED FOR ELEC COORDINATION	09.04.19	SL	JD
-	ISSUED FOR COORDINATION	24.01.18	SL	JD



**SMEC**  
Member of the Surlana Juroong Group

SMEC Australia Pty Ltd  
Tower 4, Level 20, 727 Collins Street  
Melbourne, VIC 3008, Australia  
PO Box 2827, Docklands, VIC 3002, Australia  
T +61 3 9514 1500 F +61 3 9514 1502  
E melbourne@smec.com www.smec.com

**Planning and Environment Act 1987**  
**Wyndham Planning Scheme**  
**Landscape Plan No. LS3328/19**  
**WYP10365/17 WYS4907/18**  
**Plan 4 of 5**  
**Date 14/04/2020**

**Growland**  
**Marigold Estate**  
Stage 1

Planting Plan 03

Designed S.L.      Drawn S.L.  
Checked J.D.      Approved J.D.

Status For Approval

Date Feb-20      Scale 1:250 @ A1      Sheet No. 4 of 5

Job No. 30042360L.01      Drawing No. L102      Revision D